

# SubConn® Metal Shell 1500

## 2, 3, 4, 5, 6 and 8 contacts and G2 2, 3 and 4 contacts

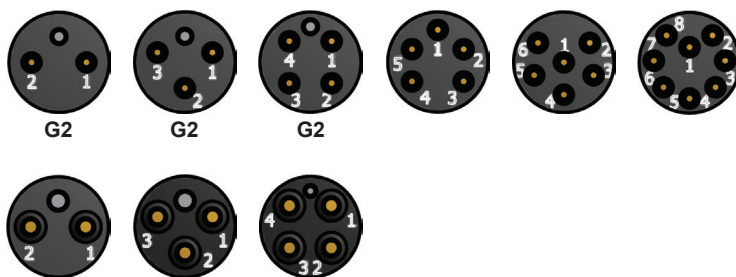
### Connector specifications

Voltage rating	300 V AC rms
DC rating	85% of above AC rating
2, 3 and 4 contacts current rating	10 A per contact (max 20 A per connector)
5, 6 and 8 contacts current rating	5 A per contact (max 20 A per connector)
G2 2, 3 and 4 contacts current rating	5 A per contact (max 20 A per connector)
Insulation resistance	> 200 Mohm
Contact resistance	< 0.01 ohm
Wet matings	> 500
Temperature rating (water)	- 4 to 60°C, 25 to 140°F
Temperature rating (air)	- 40 to 60°C, - 40 to 140°F
Storage temperature rating	- 40 to 60°C, - 40 to 140°F
Depth rating	700 bar, 10,000 psi

### Material specifications

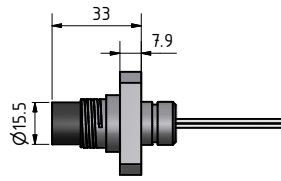
Connector body	Chloroprene rubber
Connector housing	Stainless steel AISI 316 (other materials on request)
Contacts	Female sockets in gold plated brass UNS - C36000 Male pins in gold plated beryllium copper
Location pin	Stainless steel AISI 303
Locking sleeves	ABS
Snap rings	Stainless steel AISI 302
2, 3 and 4 contacts bulkhead leads (30 cm, 1 ft)	20 AWG 0.52 mm <sup>2</sup> coloured PTFE
5, 6 and 8 contacts bulkhead leads (30 cm, 1 ft)	22 AWG 0.33 mm <sup>2</sup> coloured PTFE
G2 2, 3 and 4 contacts bulkhead leads (30 cm, 1 ft)	20 AWG 0.52 mm <sup>2</sup> coloured PTFE

### Face view (male)

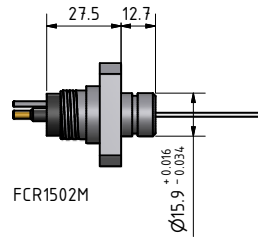
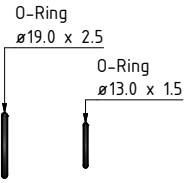




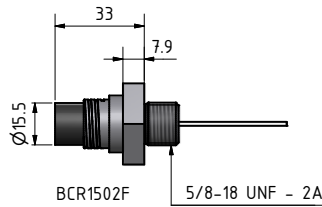
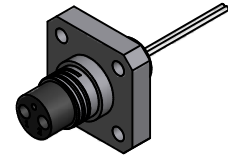
MCIL2F  
MCOM2F  
MCPBOF2F  
MCDC2F



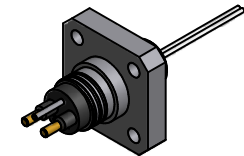
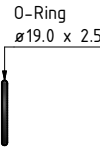
FCR1502F



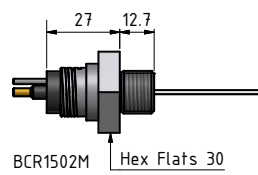
FCR1502M



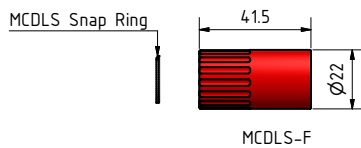
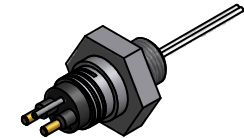
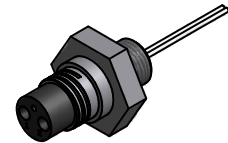
BCR1502F



MCIL2M  
MCOM2M  
MCPBOF2M  
MCDC2M



BCR1502M



MCDLS-F

**Drawing information**

Dimensions in mm (1 mm = 0.03937 inch)  
Threads in inches (1 inch = 25.4 mm)