

SubConn® Circular Right Angle 6, 8 and 10 contacts

Connector specifications

Voltage rating	600 V AC rms
DC rating	85% of above AC rating
Current rating	10 A per contact (max 50 A per connector)
Insulation resistance	> 200 Mohm
Contact resistance	< 0.01 ohm
Wet matings	> 500
Temperature rating (water)	- 4 to 60°C, 25 to 140°F
Temperature rating (air)	- 40 to 60°C, - 40 to 140°F
Storage temperature rating	- 40 to 60°C, - 40° to 140°F
Depth rating	1,400 bar, 20,000 psi

Material specifications

Connector body	Chloroprene rubber
Contacts	Brass UNS - C36000
Location pin	AISI 303
Locking sleeves	POM
Snap rings	AISI 302
6 and 8 conductor inline cable (60 cm, 2 ft)	16 AWG 1.31 mm ² chloroprene rubber
10 conductor inline cable (60 cm, 2 ft)	18 AWG 0.82 mm ² chloroprene rubber

Face view (male)

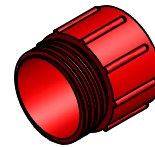
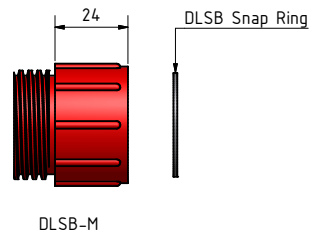
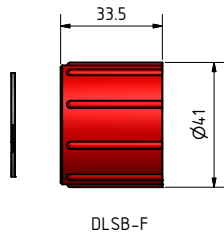
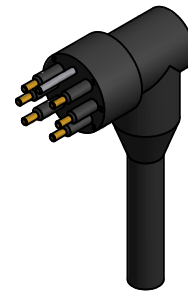
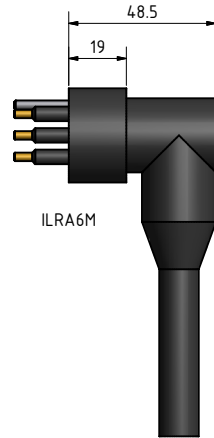
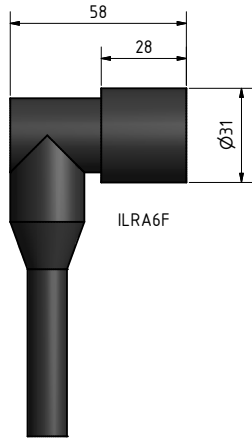


Inline cable colour code

1 Black	4 Green	7 White/black	10 Orange/black
2 White	5 Orange	8 Red/black	
3 Red	6 Blue	9 Green/black	

Nominal cable outside diameter (OD)

6 conductor cable	0.520", 13.2 mm
8 conductor cable	0.555", 14.1 mm
10 conductor cable	0.605", 15.4 mm



Drawing information

Dimensions in mm (1 mm = 0.03937 inch)
Threads in inches (1 inch = 25.4 mm)